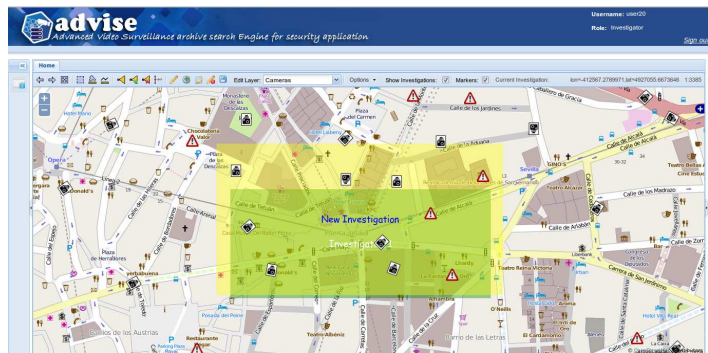


## Creating an investigation

ADVISE framework supports law enforcements in their fight against criminality by providing them automated and smart surveillance solutions by extracting information in surveillance-archive systems.

ADVISE tool provides investigators with a tool capable to support them in following criminal traces through the surveillance video archives.

The tool allows a Supervisor to create an **investigation**, described by a specific criminal event occurred in a specific area and at a specific time, and to assign it to an authorized investigator. In order to put borders to the investigation, the Supervisor can **select an area on a map** and allow the investigator to access just to the information related to a specific area.



## Which are the events considered?

An essential part of the ADVISE project will be related in analysing the practical applications allowed by the current laws and norms, realizing a pilot tool capable to identify specific criminal events captured by video surveillance systems.

The following initial set of events has been identified to represent the main common events:

- **Beat and Run Away**

The event is related to an incident verified in an area with many people and regarding a person who suffered an unprovoked attack by an aggressor, later ran away.

- **Theft (Pick Pocketing)**

The event considered is occurring in a public thoroughfare near high tourist attraction area, where foreign tourists are the most likely victims. The incident to be identified is a pick pocketing event.

- **Vandalism against Parked Vehicles**

The event to be identified is represented by a person vandalizing a vehicle in a private parking area and then running away jumping across the boundary wall.

- **Stealing of Fuel**

The incident to be identified is occurring in a vehicle parking area, where a person getting very close to a vehicle for a while, steal its fuel and leave the parking area with a fuel tank.

- **Vandalism against Company Walls**

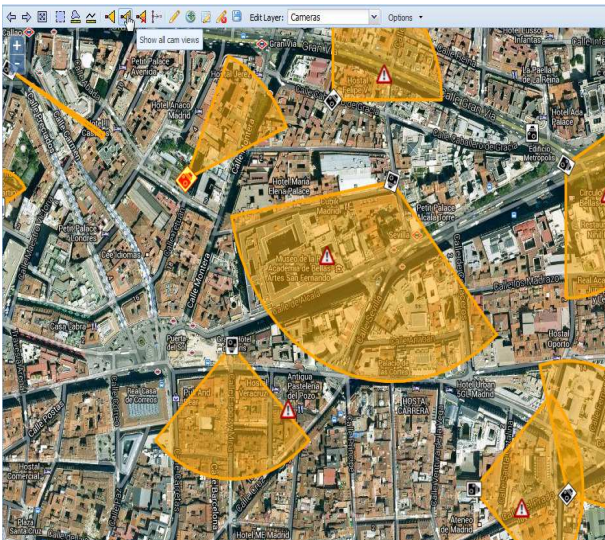
The event is related to a person that, after having entered in a Company facility, writes on the wall of a building corridor and then quits the area.

---

## Geographical Information Systems (GIS)

The ADVISE system accesses and analyses archived video-surveillance data and correlates them with specific Geographical Information Systems (GIS) overlays that project the occurrence of an incident on a geo-location map.

The GiS Component functionality manages cameras on the geo-location map, supporting, also, the user in the administration of incidents, providing the necessary interface to create, edit/modify and delete instances of cameras and incidents on the geo-location map. Moreover, both the location of the cameras and statistical information may be visualized through the GiS Component functionality.



The main functionalities provided by the GIS system to the users are:

- **The identification and geo-annotation of areas covered by surveillance camera:** cameras and incidents are pinpointed on the geo-location map. The field of view (FoV) of each camera is displayed on the geo-location map.
- **Geographic traces of an incident:** the GiS component supports the user in the identification of cameras close

to a specific one that captured and incident. Taking into account the relevant time that the incident took place, the GiS component can determine those cameras that would most likely have captured additional traces of the protagonists of the incident.

---

## Privacy an Ethical Impact analysis: the Privacy Impact Assessment (PIA)

The ADVISE project takes into high consideration the compliance with European standards on privacy, data protection and ethics.

ADVISE deals with the challenge of identifying all relevant issues, ethical and privacy related, connecting in the meantime the perspectives of the technical users, security professionals, citizens, and governmental and non-governmental oversight mechanisms.

The Privacy an Ethical Impact Analysis is conducted through three steps:

- A Privacy by Design methodology, adopted in order to comply with legal and ethical standards.
- The evaluation of an external Advisory Board and of an internal data protection controller of the all the researches involving privacy and ethics carried out by the project.
- A Privacy Impact Assessment (PIA), to implement the Privacy by Design concept.

**Privacy Impact Assessment (PIA)** is a methodology for assessing the impacts on privacy of a project, policy, programme, service, product or other initiative in consultation with stakeholders, for taking remedial actions as necessary in order to avoid or minimise the negative impacts.

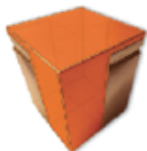
---

## ADVISE at ICDP 2013

ADVISE project will be presented at the conference “Imaging Crime Detection and Prevention (ICDP)” 2013 (<http://www.icdp-conf.org>) in collaboration with VIDEOSENSE project- placed in London on the 16th and 17th of December 2013.

---

## PROJECT PARTNERS



INFORMATICS & TELEMATICS INSTITUTE  
centre for research and technology - helios

